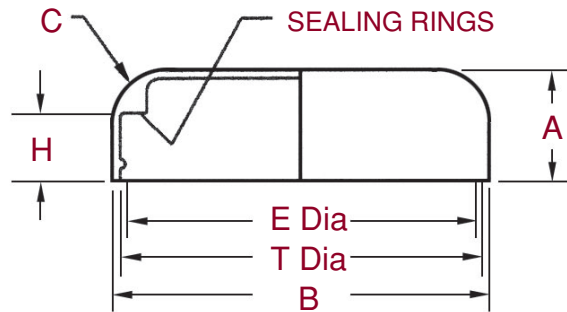


# IntraPac Jar Closures

## Domed Closures Smooth or Textured



IntraPac Domed jar closures are offered in the sizes as indicated in the chart. Please refer to both the drawing and chart for specific dimensions for each size.

Size	Material	Gram Wt	A	B	C	H	T	E	Deco Area	Pcs/Carton
RC 33 /400	PP	2.5+/-2gr.	.455+/-0.015	1.390+/-0.015	R.125+/-0.015	.397+/-0.009	1.270+/-0.010	1.186+/-0.007	.906	3500
RC 53 /400	PP	6.0+/-5gr.	.635+/-0.015	2.205+/-0.015	R.375+/-0.015	.397+/-0.009	2.075+/-0.007	1.981+/-0.007	1.250	1300
RC 58 /400	PP	7.2+/-1gr.	.700+/-0.015	2.360+/-0.015	R.500+/-0.020	.400+/-0.009	2.232+/-0.007	2.145+/-0.009	1.250	1100
RCT 58 /400 Textured	PP	7.2+/-1gr.	.700+/-0.015	2.360+/-0.015	R.500+/-0.020	.400+/-0.009	2.232+/-0.007	2.145+/-0.009	1.250	1100
RCT 63 /400 Textured	PP	9.1+/-1gr.	.676+/-0.015	2.604+/-0.015	R.437+/-0.015	.435+/-0.009	2.469+/-0.007	2.375+/-0.007	1.4680	900
RC 70 /400	PP	10.0+/-1gr.	.712+/-0.015	2.890+/-0.015	R.500+/-0.020	.418+/-0.015	2.752+/-0.009	2.652+/-0.009	1.850	700
RCT 70 /400 Textured	PP	11.0+/-1gr.	.716+/-0.015	2.885+/-0.015	R.500+/-0.020	.415+/-0.015	2.744+/-0.007	2.650+/-0.007	1.745	700
RC 83 /400	PP	15.5+/-1gr.	.890+/-0.015	3.420+/-0.015	R.630+/-0.020	.476+/-0.009	3.277+/-0.008	3.157+/-0.008	2.050	385
RC 89 /400	PP	16.4+/-1 gr.	.690+/-0.015	3.670+/-0.015	R.375+/-0.015	.460+/-0.010	3.512+/-0.008	3.400+/-0.008	2.775	300
RCT 89 /400 Textured	PP	16.4+/-1 gr.	.690+/-0.015	3.670+/-0.015	R.375+/-0.015	.460+/-0.010	3.512+/-0.008	3.400+/-0.008	2.781	300
RC 100 /400	PP	24.6+/-1.5gr.	.912+/-0.015	4.100+/-0.015	R.375+/-0.015	.650+/-0.009	3.947+/-0.009	3.809+/-0.009	3.125	300

*IntraPac reserves the right to change or modify the design of its products without any obligation to provide notification of change or intent to change.*

