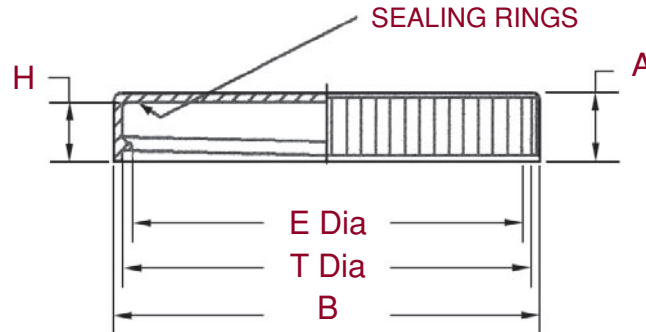


IntraPac Jar Closures

Ribbed Sided Smooth Top Closures



IntraPac Ribbed Sided Smooth Top jar closures are offered in the sizes as indicated in the chart. Please refer to both the drawing and chart for specific dimensions for each size.

Size	Material	Gram Wt	A	B	H	T	E	Deco Area	Pcs/Carton
R 28 /400	PP	1.5+/- .5gr.	.440+/- .015	1.185+/- .015	.397+/- .009	1.096+/- .007	1.002+/- .007	*	5000
R 33 /400	PP	2.9+/- .5gr.	.440+/- .015	1.405+/- .015	.382+/- .010	1.270+/- .010	1.179+/- .007	1.06+/- .125	3500
R 38 /400	PP	3.0+/- .5gr.	.440+/- .015	1.620+/- .015	.397+/- .009	1.484+/- .007	1.390+/- .007	*	2700
R 40 /400	PP	2.8+/- .5gr.	.435+/- .015	1.680+/- .015	.397+/- .009	1.588+/- .007	1.494+/- .007	*	2300
R 43 /400	PP	3.7+/- .5gr.	.435+/- .015	1.780+/- .015	.397+/- .009	1.662+/- .007	1.568+/- .007	*	2000
R 45 /400	PP	4.0+/- .5gr.	.445+/- .015	1.875+/- .015	.397+/- .009	1.748+/- .007	1.654+/- .007	*	1800
R 48 /400	PP	4.2+/- .4gr.	.450+/- .015	1.990+/- .015	.397+/- .009	1.880+/- .009	1.784+/- .007	*	1742
R 53 /400	PP	4.6+/- .3gr.	.450+/- .015	2.170+/- .015	.397+/- .009	2.075+/- .007	1.981+/- .007	*	1300
R 58 /400	PP	6.2+/- .3gr.	.450+/- .015	2.355+/- .015	.397+/- .009	2.227+/- .007	2.132+/- .007	*	1100
R 63 /400	PP	6.7+/- .5gr.	.450+/- .015	2.600+/- .015	.397+/- .009	2.469+/- .007	2.375+/- .007	*	900
R 70 /400	PP	1.8+/- .1gr.	.455+/- .015	2.850+/- .015	.396+/- .011	2.744+/- .007	2.655+/- .007	*	700
R 83 /400	PP	12.0+/- .1gr.	.535+/- .015	3.390+/- .015	.476+/- .009	3.279+/- .010	3.159+/- .010	*	425
R 89 /400	PP	16.0+/- .8gr.	.605+/- .015	3.653+/- .015	.513+/- .013	3.524+/- .008	3.404+/- .008	*	300
R 110 /400	PP	23.0+/- .3gr.	.610+/- .015	4.481+/- .015	.560+/- .010	4.325+/- .010	4.220+/- .010	*	300

* Will advise upon request



IntraPac reserves the right to change or modify the design of its products without any obligation to provide notification of change or intent to change.