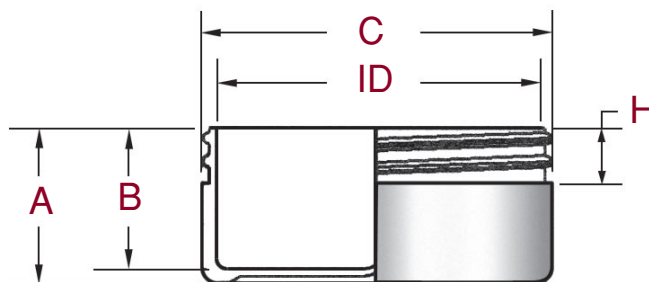


# IntraPac Plastic Jars

## Low Profile Heavy Single Wall Jars



IntraPac Low Profile Heavy Single Wall Jars are offered in the sizes as indicated in the chart. Please refer to both the drawing and chart for specific dimensions for each size.

### Low Profile Heavy Single Wall Jars

Size	Neck	Material	Gram Wt	OFC	A	B	C	ID	H	*Deco Area	Pcs/Carton
1 oz	70mm	PP	21.3+/-1.5gr.	60+/-3.0cc	.908+/- .015	.770+/- .015	2.843+/- .015	2.490+/- .015	.408+/- .015	.18 x 8.68"	330
1 oz	70mm	PS	24.8+/-1.5gr.	65+/-3.5cc	.920+/- .015	.788+/- .015	2.880+/- .015	2.510+/- .015	.408+/- .015	.21 x 8.87"	330
1 oz	70mm	SAN	24.8+/-1.5gr.	65+/-3.5cc	.920+/- .015	.788+/- .015	2.880+/- .015	2.510+/- .015	.408+/- .015	.21 x 8.87"	330
2 oz	70mm	PP	27.5+/-3.0gr.	89+/-4.5cc	1.295+/- .015	1.183+/- .015	2.836+/- .015	2.490+/- .015	.408+/- .015	.56 x 8.68"	297
3 oz	70mm	PP	29.6+/-1.5gr.	100.3+/-5.0cc	1.405+/- .015	1.293+/- .015	2.843+/- .015	2.490+/- .015	.408+/- .015	.68 x 8.68"	297
3 oz	70mm	PS	37.7+/-2.0gr.	103.3+/-5.2cc	1.430+/- .015	1.305+/- .015	2.898+/- .015	2.515+/- .015	.408+/- .015	.68 x 8.75"	297
3 oz	70mm	SAN	37.7+/-2.0gr.	103.3+/-5.2cc	1.430+/- .015	1.305+/- .015	2.898+/- .015	2.515+/- .015	.408+/- .015	.68 x 8.75"	297
4 oz	89mm	PP	46.4+/-3.0gr.	176+/-9cc	1.504+/- .015	1.348+/- .015	3.624+/- .015	3.242+/- .015	.535+/- .015	.65 x 10.9"	160

\* Please contact us on artwork layout.

*IntraPac reserves the right to change or modify the design of its products without any obligation to provide notification of change or intent to change.*

